



100% Electric Vehicles

www.e-ride.com



e-ride Industries manufactures and sells 100% electric passenger and utility vehicles that are meant to serve a need. Whether that need is: saving money for your fleet or your own pocket, needing a vehicle that is built specifically to you to make your job or life easier, a need to cut down on our dependence of foreign fuels, or simply the need to have a quality built vehicle. e-ride industries will have you covered.

e-ride Industries is located in Princeton, MN where we believe in hard work, humble attitudes, close relationships with family, friends, customers and business partners, and like to buy and build quality products.

e-ride Industries started in 2004 with a hand built





prototype and a dream. Since then, a group of young entrepreneurs and engineers have combined their talents to build a quality product and a quality business. e-ride's new models are a culmination of all the knowledge built up since 2004, a lot of hard work, vision, and passion put into 2 models, the exv2 Patriot and the exv4. Our vehicles are purpose built from the ground up to be electric – they are not converted gasoline vehicles or golf carts made into something they were never intended to be!

e-ride Industries has enjoyed success Nationally and Internationally, but it has only just begun. Give us a call anytime and one of our team members will be sure to give you a welcoming MN hello and help you with whatever needs you may have.

EXV2 Patriot

The all new exv2 Patriot is the definition of a game changer. That's right, America's most capable electric work truck is now even better. It is proof that electric vehicles aren't only gaining popularity because of cost savings, they can also be tough, quality built, comfortable, and able to get the job done. At only two cents a mile to operate, you will not only be enjoying the comfort of your ride, you will be saving money in fuel and in maintenance costs.



Vehicle Standard Specifications:

Key Specifications :

- Max Range: Up to 40 to 55mi (88.5km)
- Max Speed: 25mph (40km/h)
- GVWR: 3000lbs (1361kg)
- Ground Clearance: 8.5" (21.6cm)
- Motor: 72Volt, 16.5hp DC Motor
- Optional Motor: 72Volt, 35 hp AC Motor (best for hilly terrain or the need for additional acceleration)
- Batteries: Nine 8-volt (72 Volt System)
- LxWxH: 155" x 61.5" x 69" (393.7 x 156.2 x 175.3 cm)
- Frame: Riveted Aluminum, Unibody
- 215/75 R14 Radial Street Rated Tires



EXV2 Patriot Standard Features:

- Push Button Dome Lights
- DC Heater/Defroster
- High/Low Beam Headlights
- Turn Signals
- Brake Lights
- Side Reflectors
- Automotive Horn
- Solid Aluminum Roof
- Auto Safety Glass Windshield and Side Windows
- Rearview & Side Mirrors
- Steel Bumpers
- Three-point Retractable Safety Belts
- Speedometer
- Battery Discharge Indicator
- Hour Meter
- Cup Holders
- 12V Power Source
- Warning Message Center
- Fault Code Display
- Battery Filling System with Low Water Dash Indicator
- Dual Windshield Wipers
- 120 Volt On Board Charger
- Automotive Tilt Steering Column
- Four Wheel Hydraulic Disc Brakes
With Hand Operated Drum Parking Brake
- Driver and Passenger Side Glove Boxes

EXV2 Patriot Models

One of the key advantages to the exv2 Patriot's design is the number of available options that it can be equipped with, delivering a targeted solution for your specific application. The exv2 Patriot has 30 different options and accessories offered (not counting custom options) which proves it to be the most versatile vehicle in the market.



• EXV2 PATRIOT UTILITY VAN

All of the benefits of the EXV2 Patriot but with an added heavy duty, thick skinned aluminum topper enclosure, with side windows and rear lockable doors

• EXV2 MAINTENANCE TRUCK

This is the perfect vehicle for all of your maintenance and hauling needs. It includes an aluminum topper with lockable toolboxes, windows & doors.



• EXV2 REFUSE HAULER

EXV2 Patriot with an added 1.75 cubic foot hydraulic dump box that is able to dump into a standard size dumpster. Perfect for trash & recycling programs



• EXV2 PATRIOT TOOL TRUCK

Lockable, diamond plate, aluminum tool boxes that offer a massive amount of storage space.



- **EXV2 PATRIOT FOLD DOWN BED SIDE TRUCK**

EXV2 Patriot with solid aluminum bed sides that can latch in the upright position forming a truck box, or fold down to allow for ease of loading, wide loads or other benefits of having a flatbed.

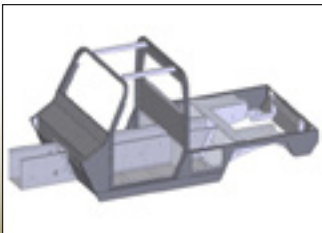


- **EXV2 REFUSE HAULER WITH TIPPER**

EXV2 Patriot with a 1.75 cubic foot hydraulic dump box that is able to dump into a standard size dumpster. This model also has a heavy duty garbage can tipper that picks up a can and dumps into the refuse haler with a simple push of a button

- **EXV2 PATRIOT TRANSPORTER**

The people transporter is the perfect option if you want to haul up to 8 people at a time for tours, events, parking, parades, etc. It can also be equipped with jacks so the option can easily be removed in a matter of minutes. This allows the same vehicle to be used in other applications.



Aluminum Chassis

All e-ride models are engineered and built with a full aluminum chassis that is light weight, yet rugged. The aluminum also helps in corrosive environments that will make you outlast the competition's vehicles every time.



EXV4

From its design to the vast array of options, the exv4 is perfect for hauling a crew of 4 to the job site, hauling tool bins to the flight line or picking up groceries from the store. The exv4 cab has more leg room and head room than any other 4 passenger NEV on the market and still leaves plenty of storage space in the rear box.

Vehicle Standard Specifications:

Key Specifications :

- Max Range: Up to 40 to 55mi (88.5km)
- Max Speed: 25mph (40km/h)
- GVWR: 3000lbs (1361kg)
- Ground Clearance: 8.5" (21.6cm)
- Optional Motor: 72Volt, 35 hp AC Motor (best for hilly terrain or the need for additional acceleration)
- Motor: 72Volt, 16.5hp DC Motor
- GVWR: 3000lbs (1361kg)
- Batteries: Nine 8-volt (72 Volt System)
- LxWxH: 152.5" x 58.5" x 72" (387.5 x 148.6 x 182.9 cm)
- Frame: Riveted Aluminum, Unibody
- 215/75 R14 Radial Street Rated Tires

The e-ride Assembly Line

e-ride vehicles being built at our facility in Princeton, MN. Each vehicle is hand built from the ground up with craftsmanship and pride.



EXV4 Standard Features:

- Push Button Dome Light
- 2 Speed DC Heater/Defroster
- High/Low Beam Headlights
- Turn Signals
- Brake Lights
- Side Reflectors
- Automotive Horn
- Solid Aluminum Roof
- Auto Safety Glass Windshield and Side Windows
- Rearview & Side Mirrors
- Steel Bumpers
- Three-point Retractable Safety Belts
- Speedometer
- Battery Discharge Indicator
- Hour Meter
- Cup Holders
- 12V Power Source
- Warning Message Center
- Fault Code Display
- Battery Filling System with Low Water Dash Indicator
- Dual Windshield Wipers
- 120 Volt On Board Charger
- Automotive Tilt Steering Column
- Four Wheel Hydraulic Disc Brakes
With Hand Operated Drum • Parking Brake
- Driver and Passenger Side Glove Boxes



Options & Accessories



• 2 Speed Fan

Integrated into the dash and helps to circulate air within the cab



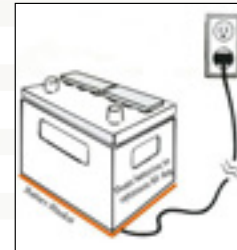
• AM FM Radio w/USB

AM/FM Stereo and USB hook up combination with a great speaker package



• Back Up Alarm

This Backup Alarm is a great safety device to have on all electric vehicles.



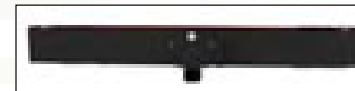
• Battery Warmer Kit

This option keeps the batteries close to their optimum temperature to combat the normal capacity drop due to temperature.



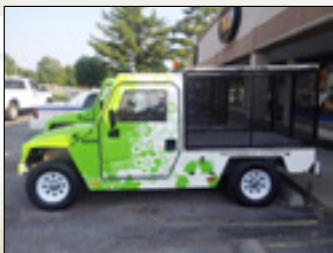
• Quad Cab Enclosure

An aluminum topper that is mounted onto the rear box of the EXV4 that encloses the box and seals it from the outside elements. This option is lockable for security.



• Receiver Hitch

2" steer receiver hitch made to fit all e-ride models.



• Trash Hauler Cage

A steel cage that is mounted on the back of the EXV2 Patriot for hauling bagged garbage cans, or anything you want to secure



• 5 Kw Fast Charger

Upgraded charger that can be purchased together with a lithium battery system. Cut your charge time down to around an hour and a half or keep your charge time the same when using a dual lithium pack for double the range.



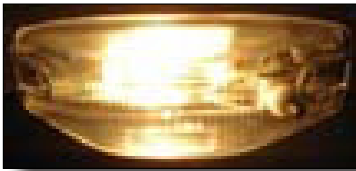
• Aluminum Enclosure Ladder Rack

This is a light Aluminum Ladder Rack that can be installed on all EXV2 Patriot Enclosure Options



• Aluminum Horizontal Tool Box

Toolbox that covers the full width of the EXV2 bed, is aluminum, and is fully lockable for security.



• EXV4 dome light

Interior Dome Light for the EXV4 four passenger. (standard on all 2 passenger models)



• Air Conditioning

Fully integrated air conditioner that works great for cooling down the cab and the operator. It has a multi-speed control knob & directional vents



• Solar Panel

Provides a slow recharge of the vehicle's batteries from sunlight. This option can be installed on any e-ride model except for the refuse hauler models.



• Tailgate Between Toolboxes

Option to contain objects placed on the flatbed. The tailgate is fully removable and attached by threaded removable knobs.



• Lockable Storage

This is a storage box that fits inside the rear cargo box of an EXV4 model. It is accessible from both sides of the vehicle and is lockable for security.



• Aluminum Wheels

These are a cosmetic replacement for the standard white rims. They are also a more corrosion resistant option for rims.

Options & Accessories



• AC Power Meter

Do you want to know how much electricity your vehicle is actually using? The AC Power Meter can be added to the dash so you know true operating costs at all times.

• AC / DC Heater

Meant to plug into AC power to heat up your vehicle so it is nice and warm as you first get in. Also great for keeping window clear

• Fast Charger Inlet

Inlet to connect to a 100 Amp fast charging system



• Lithium Ion Battery System

Compared to standard lead acid or AGM batteries, this pack is 473 lbs lighter, lasts 4-5 times longer, charges 40% faster, includes a battery warmer, is more reliable and better performing in high and low temps. Very safe and maintenance free

• Windshield Washer

Feature to add to any e-ride model for safety and visibility. It includes a momentary switch that will spray the windshield with fluid from a one gallon tank

• FUEL FIRED HEATER

Heater/defroster system that uses its own source of power fueled by gas or diesel fuel. Provides more heat than the standard heater/defroster. The fuel fired heater also doesn't take energy away from the vehicles battery pack



• Heavy Duty Steel Ladder Rack

Full Steel Ladder Rack that fits the EXV2 models and EXV4 models.

• Right Hand Drive Chassis

This option converts any e-ride model into a right hand drive vehicle.



• Reverse Light Kit

Helps the driver see when backing up in the dark as well as alerts others in the area that the driver is going to be traveling in reverse.
Available on all e-ride models.

• Seat Heater

Warms your seat to help it keep a driver or passenger warm in cold weather climates.



• Locking Sliding Rear Window



• Strobe Light

Amber light that is mounted on top of any e-ride vehicle which allows others to easily see the vehicle in any environment

Engineered For Extremes

Each e-ride vehicle is built to be able to handle the most extreme conditions. The EVX2 Patriot and EVX4 have been the vehicles of choice for some of the most hazardous environments on the planet. Just a couple of great examples of this are:

The Department of Energy and the National Science foundation purchased e-ride vehicles over any other electric vehicles to use at the McMurdo Station in Antarctica due to the way the vehicles are engineered. They felt that only e-ride vehicles could survive the brutal cold weather conditions and be able to drive on the snow and ice roads.

The Kwajalein Island is known to have one of the most corrosive island environments on the planet. It is a very small island located in the middle of the Pacific Ocean. Because of the size, location, and weather, anything made of metal materials corrode in the blink of an eye. The e-ride vehicle was chosen on this island and many other extreme environments because of our quality engineering and the aluminum chassis which is much more corrosion resistant than steel.



Redesigned Interior Cab



- **Ergonomics and Comfort**

Adjustable steering column and seats, heater/defroster, cup holders and more.

- **Automotive Quality**

Laminated safety glass in windshield and doors, auto style lock, handles, and roll down windows, steel door frame construction.

- **Fit and Finish**

Soft touch look and feel interior panels, HD Vinyl seat covers and arm rest, removable/replaceable floor matting, sealed doors.

Lithium Ion Battery System



- 473 lbs lighter than lead acid or AGM.
- Lasts 4-5 times longer.
- Charges faster and can work with a 5Kw fast charger.
- Includes a battery warmer system, works better in extreme high and low temps.



- Includes a battery management system that improves safety, allows you to diagnose from a computer, and improves performance.

- Maintenance Free.

- You have the ability to double pack and double your driving range.

Smart Charger

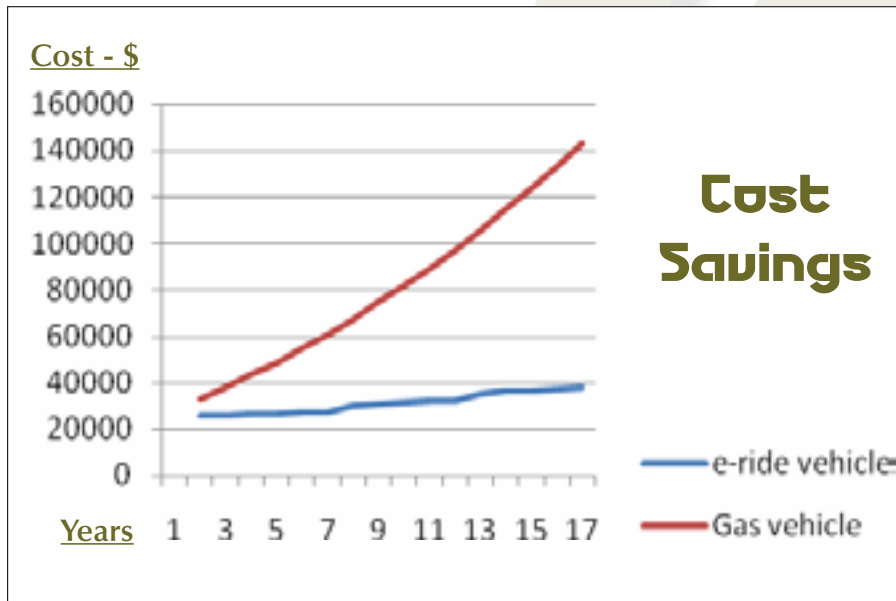
For added convenience and exceptional reliability, each e-ride model comes equipped with an onboard charger. This charger allows you to recharge your vehicle by plugging into any 110 or 220 volt outlet, no matter where you are.

Fast chargers and fast charge inlets are also available for lead acid or lithium powered, e-ride vehicles.



Cost Savings

The chart below shows the enormous life cycle cost savings of an e-ride vehicle vs. a gas pickup truck used in a city or closed campus driving environment. This includes initial cost, fuel/electric costs, and maintenance costs.



- ~\$.02/mile in electricity costs.
- ~\$.05/mile in total operating costs.
- Highest quality NEV on market. Very low maintenance costs.
- Lowest life cycle cost in the industry.

Custom Options

We at e-ride are known for our product versatility and willingness to work with our customers to meet their needs. The pictures shown are just a few examples of some of the custom options and enclosures that e-ride has produced to help fit a customer's specific needs.





Doing Our Part

Over the last ten years, e-ride vehicles have saved roughly 1,700,000 gallons of fuel and 12,250 metric tons of CO₂.

Common e-ride Vehicle Applications and Markets

- Airports
- Apartment Complexes
- Auto Dealerships
- Campgrounds
- Caverns
- Cemeteries
- Churches
- Cities
- Commercial Complexes
- Construction
- Convention Centers
- Docks
- Distribution Centers
- Farms
- Golf Courses
- Harbors
- Hospitals
- Hotels
- Industrial Complexes
- Malls
- Manufacturers
- Marinas

- Military Bases
- Mines
- Museums
- National Labs
- Nurseries
- Nursing Homes
- Parking Garages
- Parks
- Parts Depots
- Race Tracks
- Ranches
- Resorts
- Schools
- Shopping Centers
- Sports Arenas
- Stadiums
- Train Stations
- Universities
- Warehouses
- Water Treatment Plants
- Zoos



GSA# GS30F0004R

Cage Number: 3XVK3

SIN Number – 023-LSV

E-SUV, LLC DBA: e-ride Industries

WORKING FOR THE US GOVERNMENT

Whether you need a vehicle for your Military Base, Installation, National Laboratory, Federal Park System, or VA Hospital; e-ride has a solution for you. All e-ride Industries models can help you achieve the 30% fuel reduction directive as required by Executive Order 13514 because they are electric and require no fuel. The exv2 Patriot and exv4 will also help accomplish the Presidential Memorandum of 24 May 2011 stating that by 2015 all Federal Government Light Duty Vehicles must be alternative fueled. No matter what model of e-ride vehicle you choose, the low cost of owner ship and a fuel equivalency eight times greater than that of a combustion engine vehicle, e-ride vehicles are a cost effective transportation alternative.

We accept: Government
Purchase Card VISA and
MASTERCARD



GSA# GS30F0004R



3032 92nd Ave •
Princeton MN 55371
• 800.950.4351 •
www.e-ride.com

